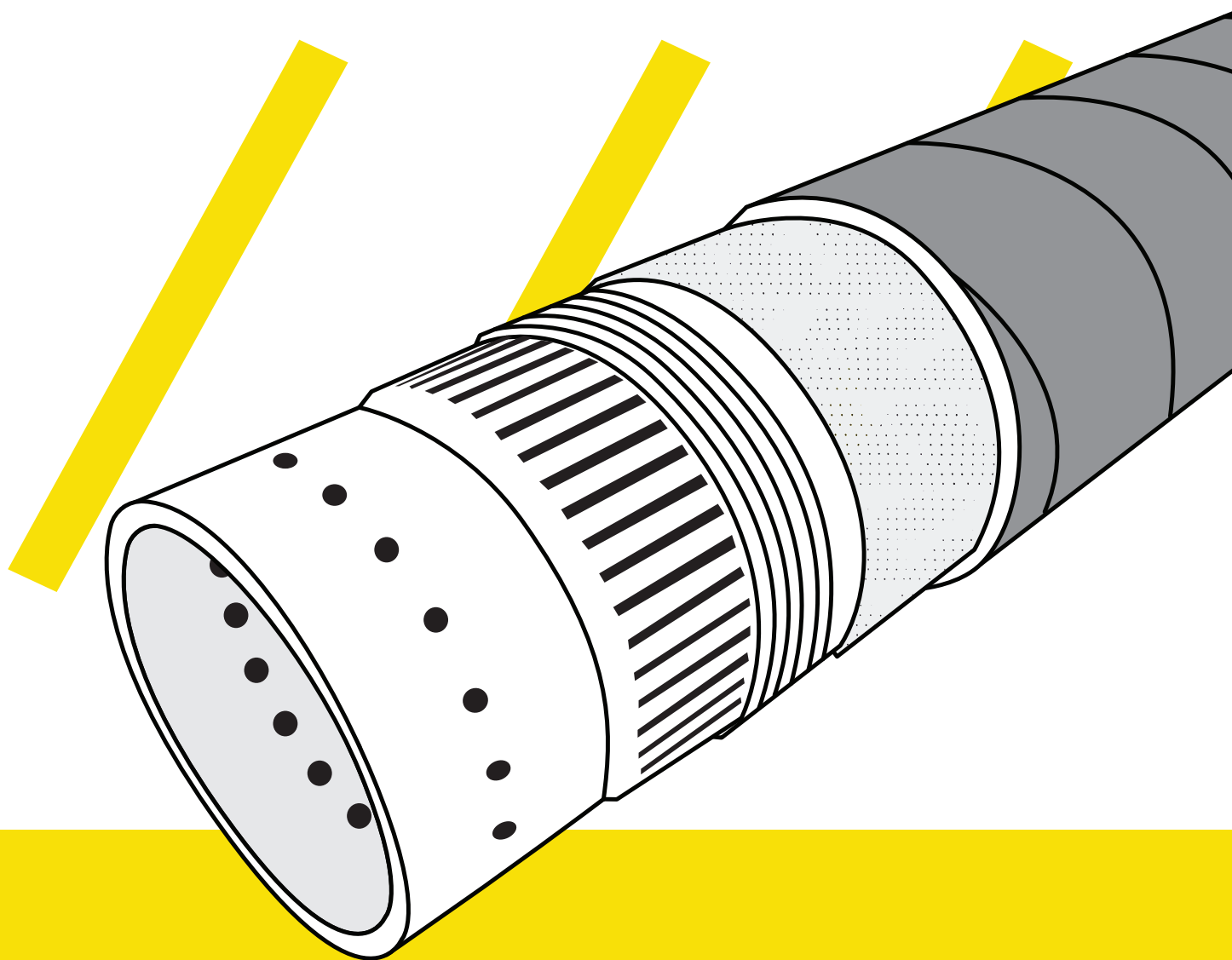


kac



**KAROTÁŽ
A CEMENTACE, S.R.O.**

MAIN ACTIVITIES
OF THE COMPANY



- 1

Logging measurements 3
- 2

Gravel pack operations 6
- 3

Installation and repair of packers by Baker Hughes 8

WIRELINE CH
COMBI TRUCK



New logging unit from GOES company
(investment 2024 – 2025)



/// Technical specification				Model: Wireline CH Combi Truck
Length (mm)	Height (mm)	Width (mm)	Weight (kg)	Permissible Total Weight (kg)
10 400	4 000	2 550	21 474	26 000

- Basic information of the new logging unit:
- Logging unit from German company **GOES GmbH**
 - Certification for the European market
 - On a 6x6 Mercedes-Benz Arocs off-road chassis
 - For measurement under pressures up to **10,000 psi**
 - For measurements in cased boreholes up to a depth of **6 500 m**
 - For measurements in cased boreholes up to a temperature of **216°C**
 - Two drums with 3/16" and 1/4" cable
 - Can be used for Slickline with 0.140 wire
 - Includes PCE panel for borehole pressure monitoring and BOP control
 - Hydraulic control station included
 - Includes lubricating aggrandizement
 - Includes unit for pressure testing on wells up to **10,000 psi**

Manufacture Date	05 / 2025
Type	6.5M-PTO-DW
Manufacture	GOES GmbH
Power Supply	230/400V, 50Hz, 32A
Control Voltage	24VDC



LOGGING
MEASUREMENTS

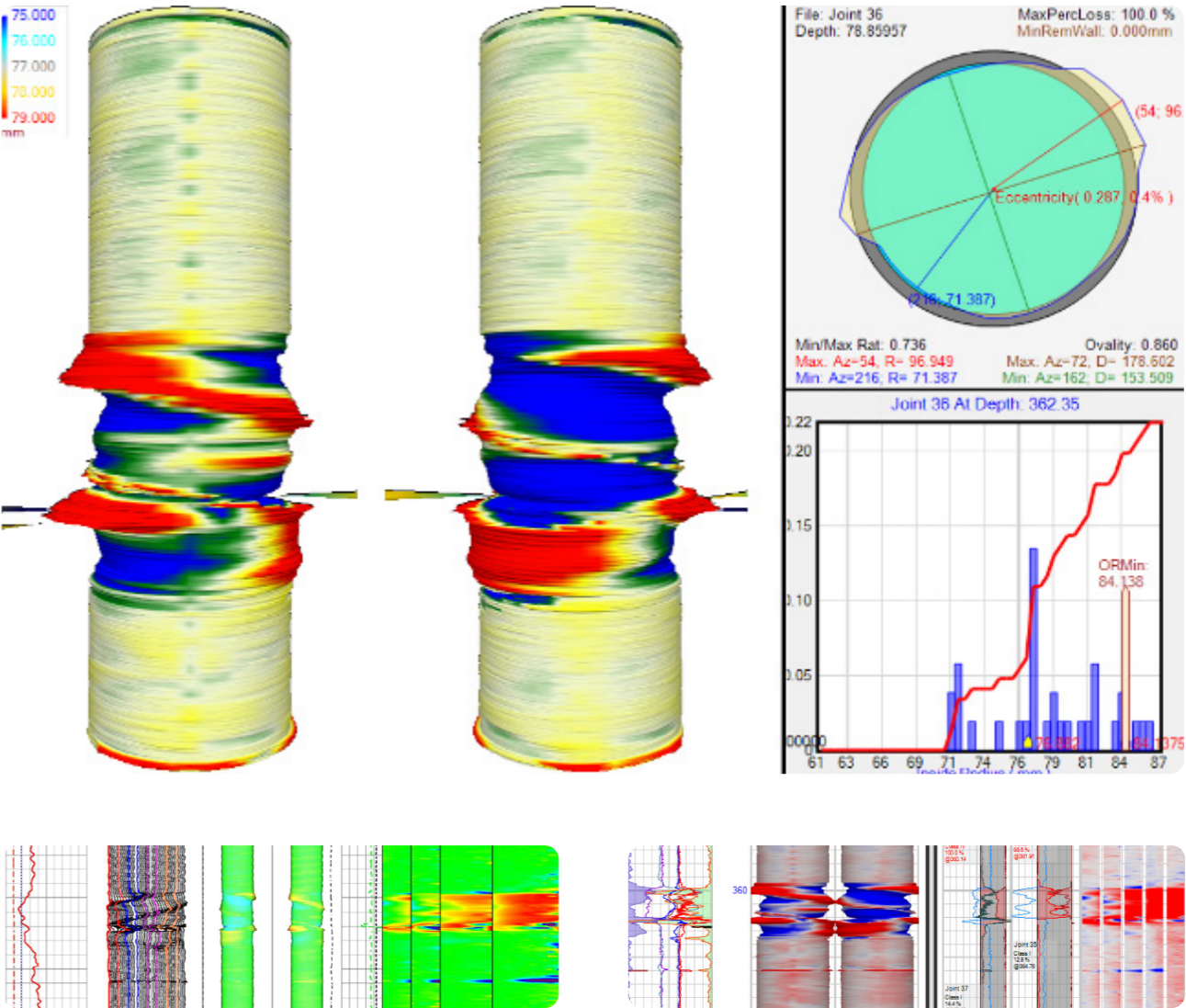
/// Logging measurements	OPEN HOLE
	technical: TM, IM, 4CAL, CCL
	electrical: SP, DLL, DIFL, MSFL, ML, MLL, RM
	acoustic: AT
	nuclear: GR, CNL, CDL
/// Logging measurements	CASED HOLE
	technical: TM, IM, CCL, MFC 56, MFC 40, FM
	electrical: RM, FID
	acoustic: AC, SCBL-RIB 12, SCBL-RIB 8, AT
	nuclear: GR, CNL, DDN, GGK, PNN
/// Logging measurements	PRODUCTION
	technical: TM, CCL, FM, PRESS
	electrical: RM, FID
	acoustic: —
	nuclear: GR, DDN, GGK, PNN

Logging measurement is a set of geophysical methods used to establish physical properties of rocks and to determine a technical condition of the borehole. The data evaluations can establish: porosity, density, saturation by water or hydrocarbons, boundary of clay and sand horizons, temperature gradient and technical data of the borehole – diameter, deviation, azimuth, quality of the casing – cement contact.

MEASUREMENT
RESULTS

(for example):

Deformation /// Damage /// Other Problems

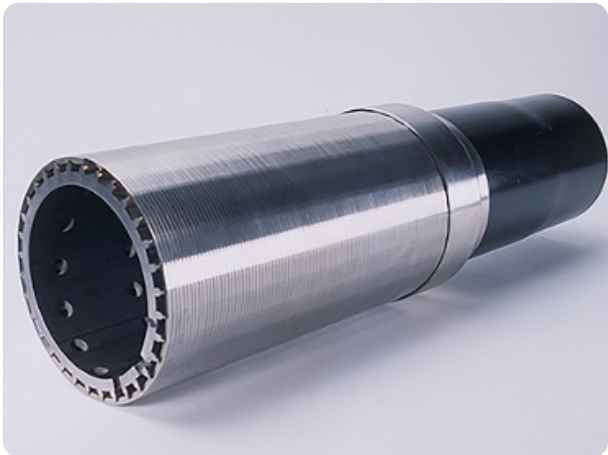


GRAVEL PACK
OPERATIONS

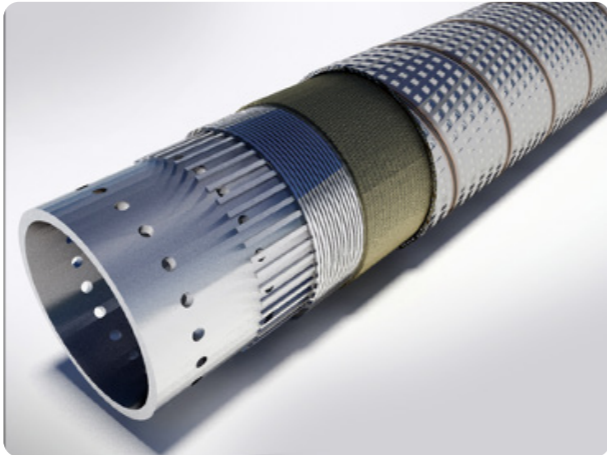
Long-term cooperation with the American Company Baker Hughes in the field Gravel Pack Operations



Gravel pack equipment (screen and sand) prevents the progress of the free formation material into the production wells. It protects the well completion against plugging up and the abrasion. It is performed especially in the underground gas storage reservoirs but also in crude oil and hydro boreholes. Our company offers full services, that means: projects, stainless steel screens of the required diameter, gravel pack fluids and all equipment needed for the wells' assembly.



Settling
Tool:
5 1/2", 6 5/8", 7", 9 5/8"



Gravel Packing
Tool:
5 1/2", 6 5/8", 7", 9 5/8"



Screens:
Bakerweld, Excluder
2 3/8", 2 7/8", 3 1/2", 4"



Our employees are trained and certified directly by Baker Hughes

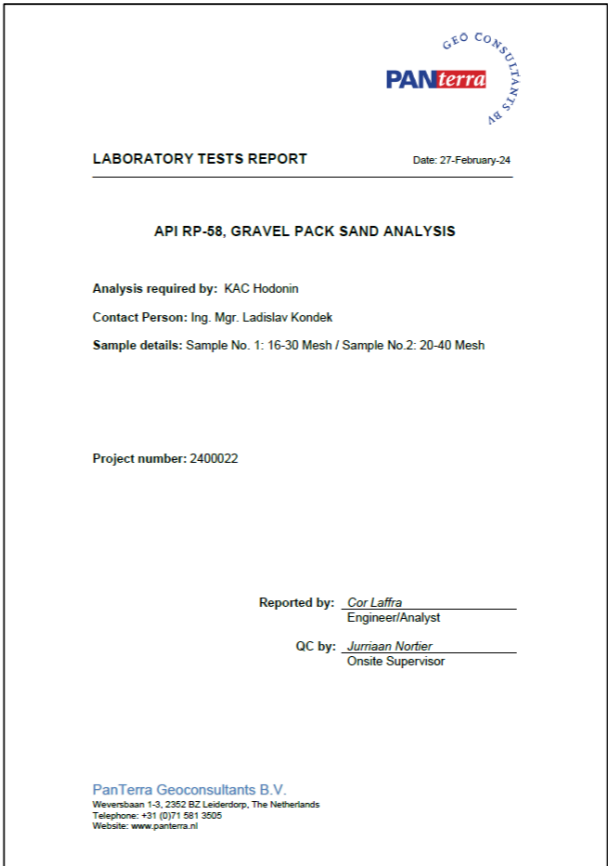
We use sorted silica sand for Gravel Pack Operations

The basic raw material for classification and certification according to API RP 58 is silica sand from Provodín (Czech Republic). The purity of the deposit (more than 98% quartz with low iron and titanium oxide content) makes Provodín sand an exceptional and valuable resource.

16 – 30 MESH (0,6 – 1,2 mm)
20 – 40 MESH (0,4 – 0,8 mm)



ALL FRACTIONS
ARE **CERTIFIED**
ACCORDING TO
API RP 58



LONG-TERM COOPERATION WITH THE AMERICAN COMPANY **BAKER HUGHES** IN THE FIELD INSTALLATION AND REPAIR OF PACKERS

Our company provides servicing for packers manufactured by the American company Baker Hughes, including the SC-1 and SC-2 Packer, A-2 and A-3 Lok-SET Packer Retrievable and Production Injection Packer series.

Only original spare parts from the American company Baker Hughes are used for servicing.



kac

CONTACT

kac@karotaz.cz | www.karotaz.cz

Velkomoravská 2606/83,
695 01 Hodonín Czech Republic

